

Have you completed a recognised, registrable entry-level qualification in Chiropractic at a **recognised accredited program in Australia or New Zealand**?

AND/OR

Do you hold current general registration without conditions issued by the Chiropractic Board of Australia or a current and unconditional Annual Practising Certificate issued by the New Zealand Chiropractic Board?

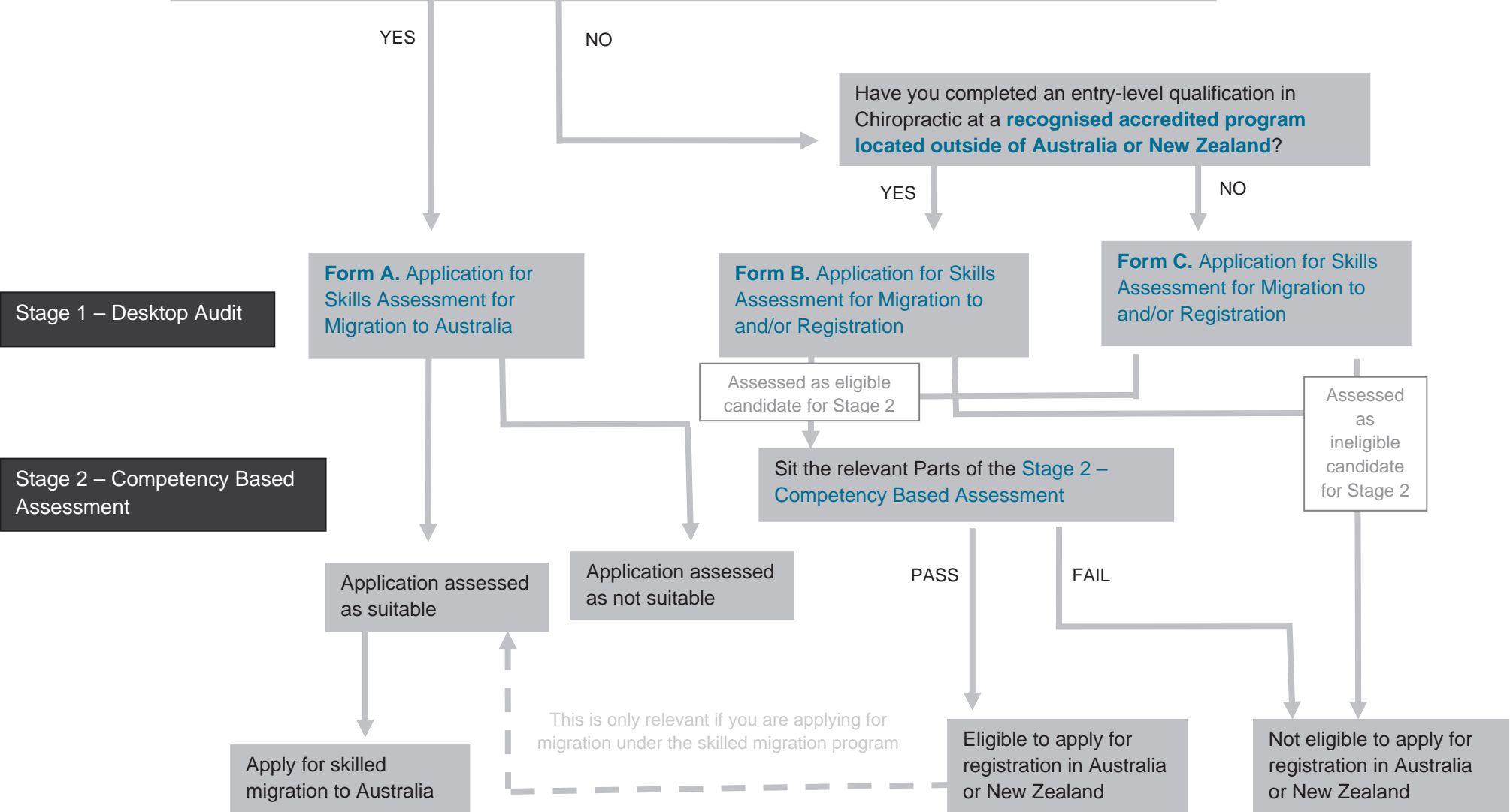


Figure 1. CCEA assessment process